



Meridian.

Monthly Operating Report

June 2021

MEMBER OF
Dow Jones
Sustainability Indices

In collaboration with  S&P Global SAM

June highlights

In the month to 13 July 2021, national hydro storage increased from **70%** to **92%** of historical average

South Island storage increased to **100%** of average and North Island storage increased to **50%** of average by 13 July 2021

Meridian's June 2021 monthly total inflows were **159%** of historical average

Meridian's Waitaki catchment water storage at the end of June 2021 was **82%** of historical average

Water storage in Meridian's Waiau catchment was **above** average at the end of June 2021

National electricity demand in June 2021 was **0.5%** higher than the same month last year

June 2021 was the warmest June on record with the nationwide average temperature 2.0°C above average. Rainfall was mixed, including above average rainfall in western Southland

Meridian made calls under the Genesis swaption in June and early July 2021

Outages have been confirmed out to December 2021 on the Roxburgh-Livingstone line as part of the Clutha Upper Waitaki Lines Project

New Zealand Aluminium Smelter's average load during June 2021 was **554MW**

Meridian's New Zealand retail sales volumes in June 2021 were **12.8%** higher than June 2020

Compared to June 2020, segment sales increased in residential +2.2%, small medium business +37.5%, and corporate +15.4%. Agricultural volumes were the same as June 2020 and large business volumes were -3.4% lower

Q4 highlights

Meridian's Q4 total inflows were **116%** of historical average and **40%** higher than Q4 last year

Meridian's Waitaki catchment water storage at the end of Q4 was **10%** higher than Q4 last year

Compared to Q4 last year, Meridian's New Zealand generation was **12.4%** lower at a **180.7%** higher average price

By the end of Q4, NZ futures prices had fallen compared to the end of Q3

New Zealand Aluminium Smelter's average load during Q4 was **557MW** compared with **559MW** in Q4 last year

National electricity demand in Q4 was **5.6%** higher than Q4 last year

At the end of Q4, Meridian's New Zealand customer numbers were **7.0%** higher than the same time last year

Compared to Q4 last year, Meridian's NZ retail sales volumes were **23.5%** higher at a **7.2%** higher average price

All segments showed increased sales in Q4

Compared to Q4 last year, Meridian's Australian wind generation was **2.8%** lower at a **28.1%** higher average price

Hume water storage finished Q4 with **70%** more storage than Q4 last year

At the end of Q4, Meridian's Australian electricity customer numbers were **4.3%** higher the same time last year

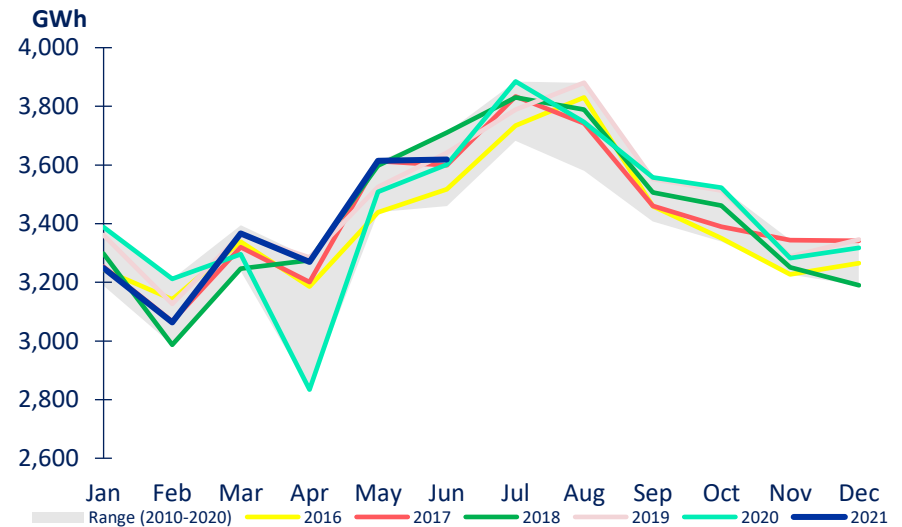
Compared to Q4 last year, Meridian's Australian retail sales volumes were **6.5%** higher at a **6.7%** lower average price

Compared to Q4 last year, Meridian Group Operating costs were **8.1%** higher and Stay in Business Capital Expenditure was **16.7%** higher

Market data

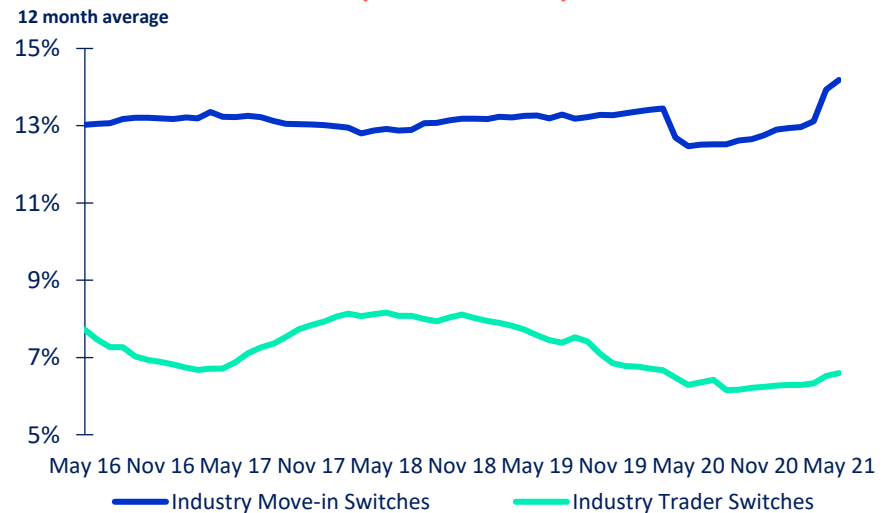
- National electricity demand in June 2021 was 0.5% higher than the same month last year
- June 2021 was the warmest June on record with the nationwide average temperature 2.0°C above average. Rainfall was mixed, including above average rainfall in western Southland
- Demand in the last 12 months was 0.7% higher than the preceding 12 months
- New Zealand Aluminium Smelter's average load during June 2021 was 554MW
- 12-month average switching rate of customers changing retailers but not moving ("trader" switch) was 6.6% at the end of May 2021
- 12-month average switching rate of customers moving and changing retailers ("move-in" switch) was 14.2% at the end of May 2021

NATIONAL DEMAND



Source: Electricity Authority (reconciled demand)

MARKET ICP SWITCHING (ALL RETAILERS)

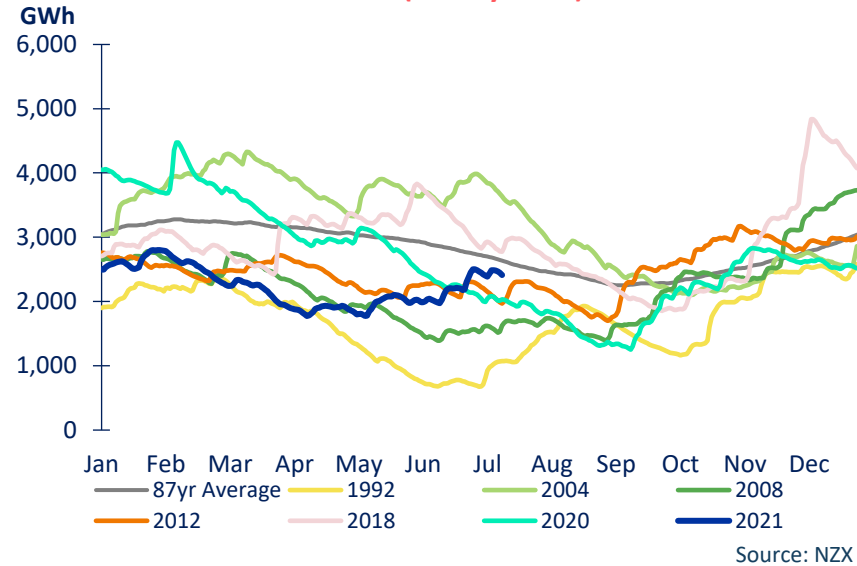


Source: Electricity Authority

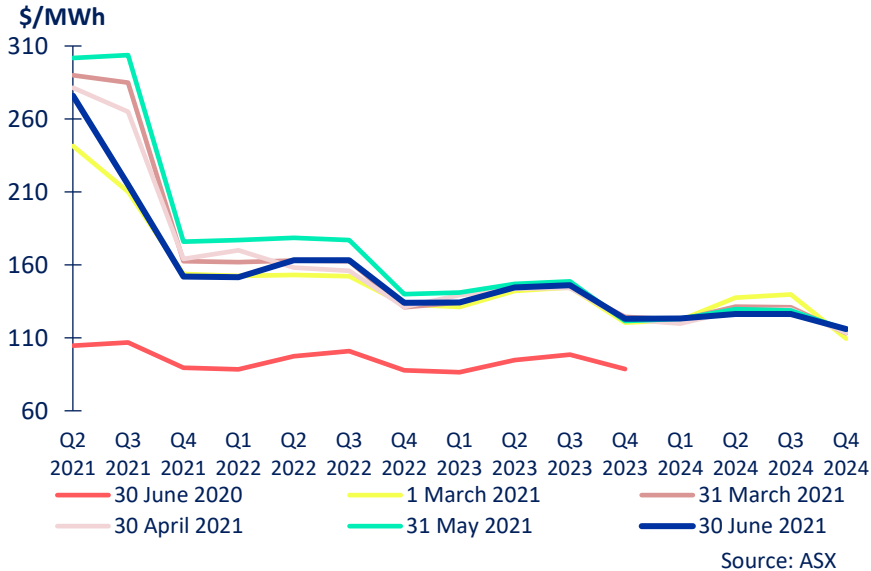
Market data

- June 2021 saw decreases in 2021 and 2022 ASX prices
- National storage increased from 70% of average on 10 June 2021 to 92% of average on 13 July 2021
- South Island storage increased to 100% of historical average by 13 July 2021. North Island storage increased to 50% of average

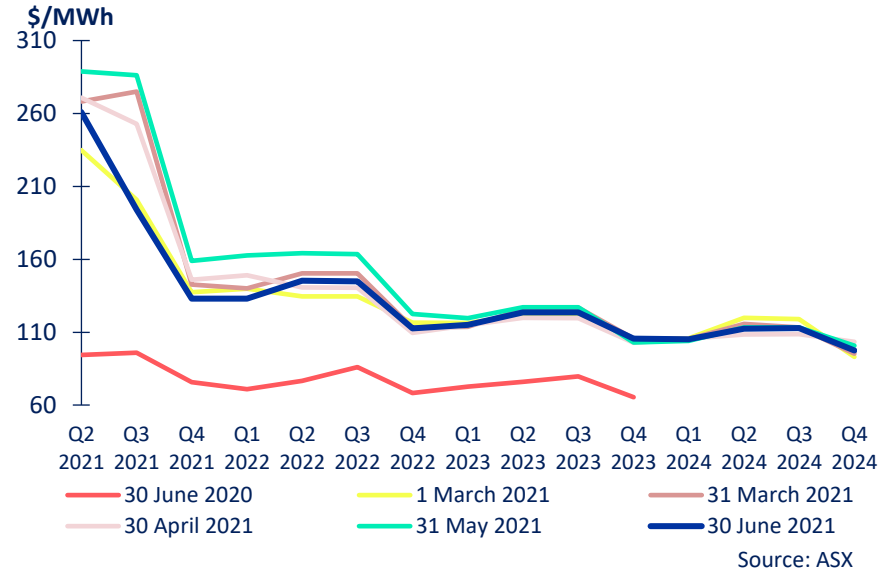
NATIONAL HYDRO STORAGE (13 July 2021)



OTAHUHU ASX FUTURES SETTLEMENT PRICE



BENMORE ASX FUTURES SETTLEMENT PRICE

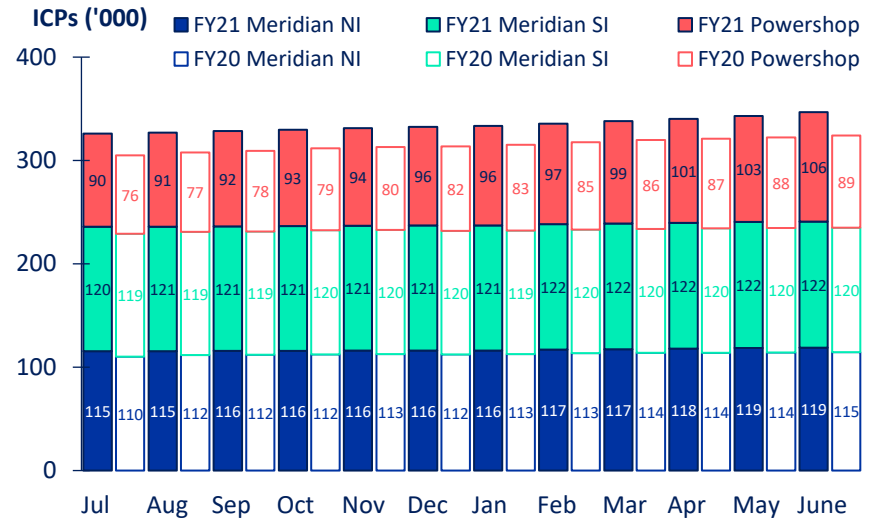


New Zealand retail

- Meridian’s New Zealand customer connection numbers rose 1.1% during June 2021 and have risen 7.0% since June 2020
- Retail sales volumes in June 2021 were 12.8% higher than June 2020
- Compared to June 2020, segment sales increased in residential +2.2%, small medium business +37.5%, and corporate +15.4%. Agricultural volumes were the same as June 2020 and large business volumes were -3.4% lower
- To date this financial year, retail sales volumes are 13.9% higher than the same period last year
- This reflects increased sales in all segments: residential +3.8%, small medium business +23.7%, agricultural +8.7%, large business +12.3% and corporate +18.2%

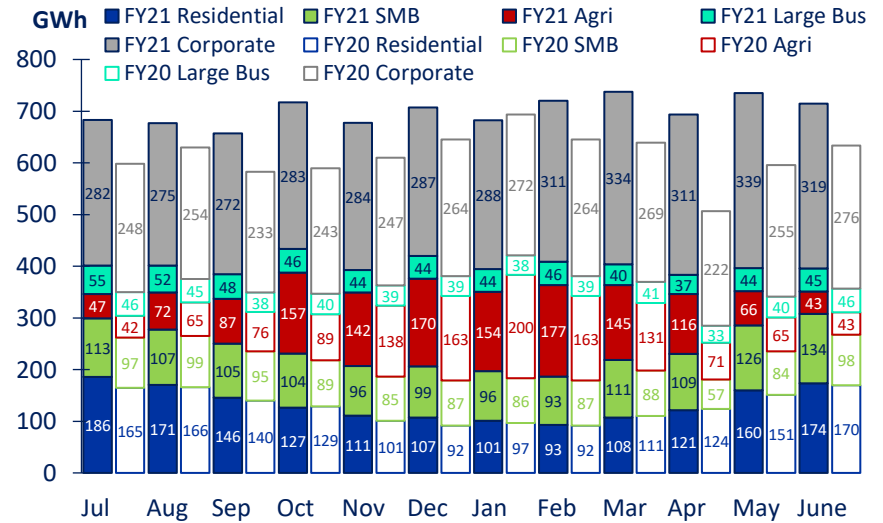
*excludes volumes sold to New Zealand Aluminium Smelters and CFDs

MERIDIAN'S NZ CUSTOMER CONNECTIONS



Source: Meridian

MERIDIAN'S RETAIL SALES VOLUME*

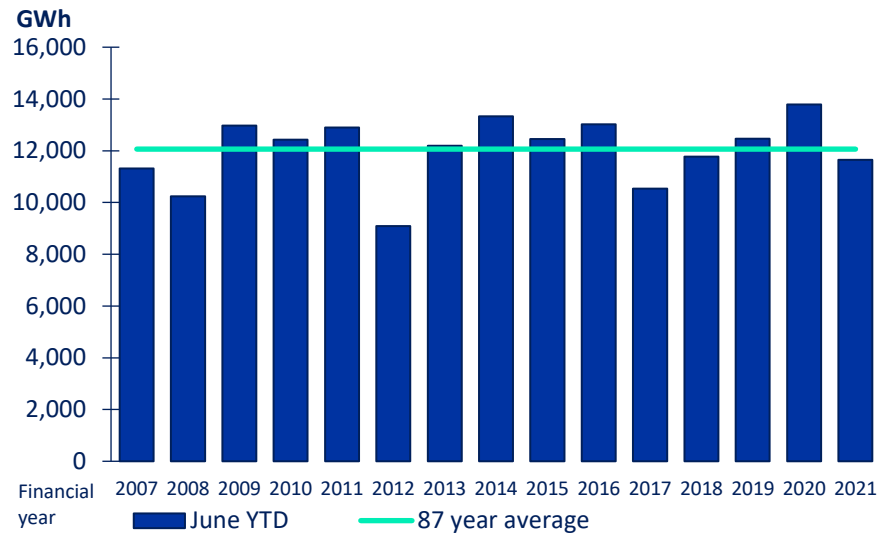


Source: Meridian

New Zealand storage

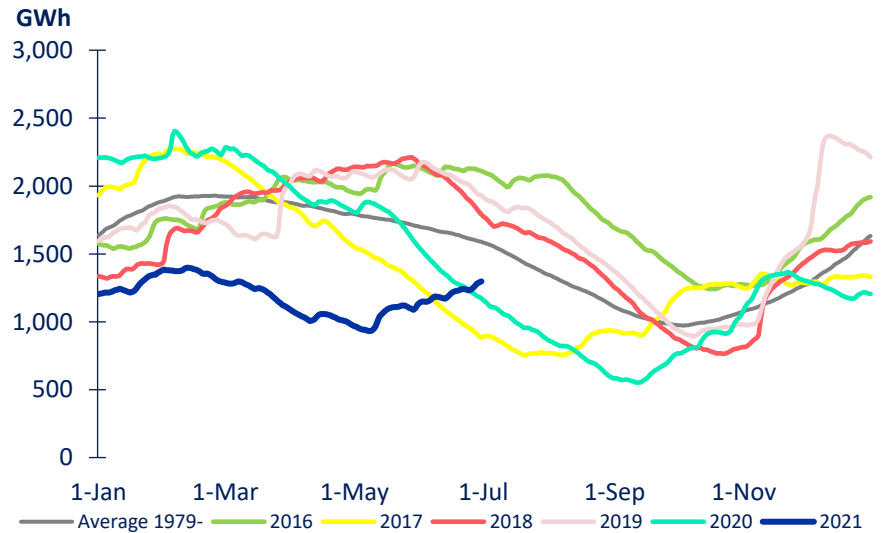
- June 2021 monthly inflows were 159% of historical average
- To date this financial year, inflows are 97% of historical average
- Meridian’s Waitaki catchment water storage moved from 1,128GWh to 1,299GWh during June 2021
- Waitaki water storage at the end of June 2021 was 82% of historical average and 10% higher than the same time last year
- Water storage in Meridian’s Waiau catchment was above average at the end of June 2021

MERIDIAN'S COMBINED CATCHMENT INFLOWS



Source: Meridian

MERIDIAN'S WAITAKI STORAGE

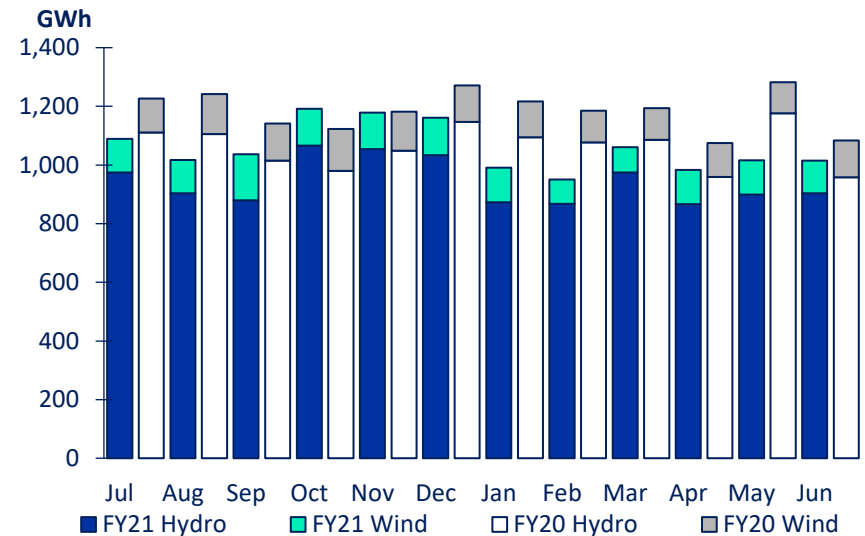


Source: Meridian

New Zealand generation

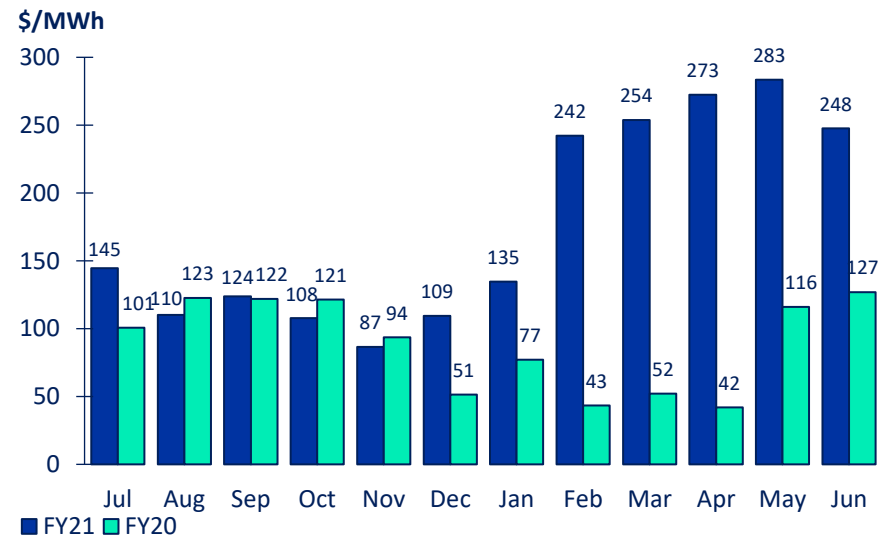
- Meridian's New Zealand generation in June 2021 was 6.4% lower than the same month last year, reflecting lower hydro and higher wind generation
- To date this financial year, Meridian's New Zealand generation is 10.8% lower than the same period last year, reflecting lower hydro and lower wind generation
- The average price Meridian received for its generation in June 2021 was 95.0% higher than the same month last year
- The average price Meridian paid to supply customers in June 2021 was 89.9% higher than the same month last year
- To date this financial year, the average price Meridian received for its generation is 94.2% higher than the same period last year and the average price paid to supply customers is 94.2% higher

MERIDIAN'S NEW ZEALAND GENERATION



Source: Meridian

MERIDIAN'S AVERAGE GENERATION PRICE*



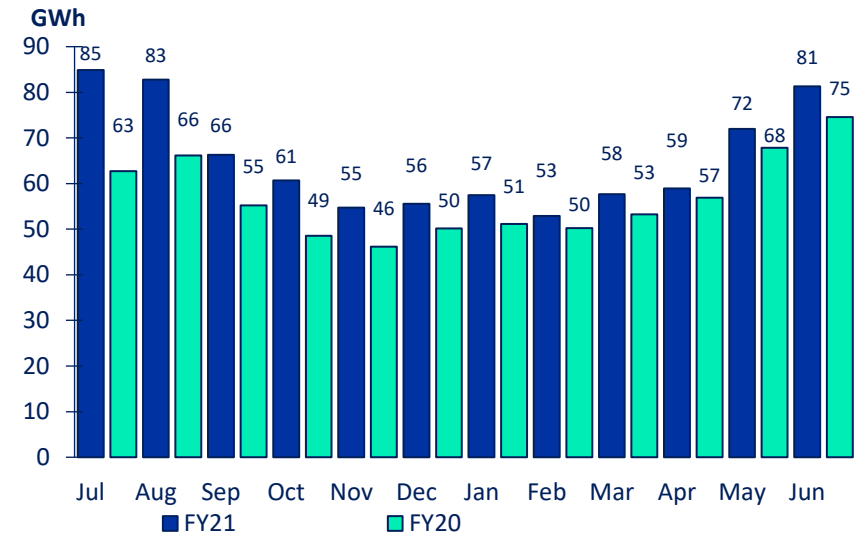
*price received for Meridian's physical generation

Source: Meridian

Australian retail

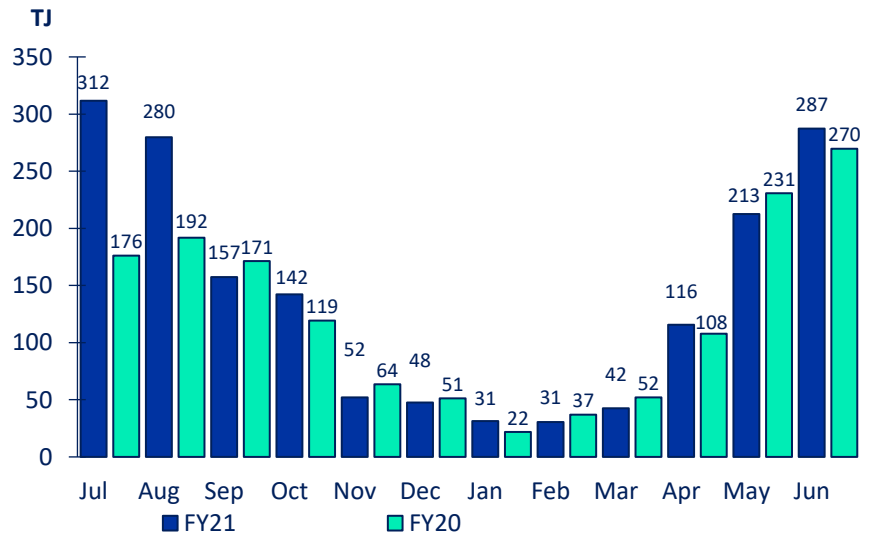
- Powershop Australia electricity customer connection numbers reduced 0.3% during June 2021 and have risen 4.3% since June 2020
- Electricity sales volumes in June 2021 were 9.1% higher than the same month last year
- To date this financial year, electricity sales volumes are 15.0% higher than the same period last year
- Powershop Australia gas customer connection numbers rose 0.5% during June 2021 and have risen 15.9% since June 2020
- Gas sales volumes in June 2021 were 6.5% higher than the same month last year
- To date this financial year, gas sales volumes are 14.7% higher than the same period last year

AUSTRALIAN RETAIL ELECTRICITY SALES VOLUMES



Source: Meridian

AUSTRALIAN RETAIL GAS SALES VOLUMES



Source: Meridian

Australian generation

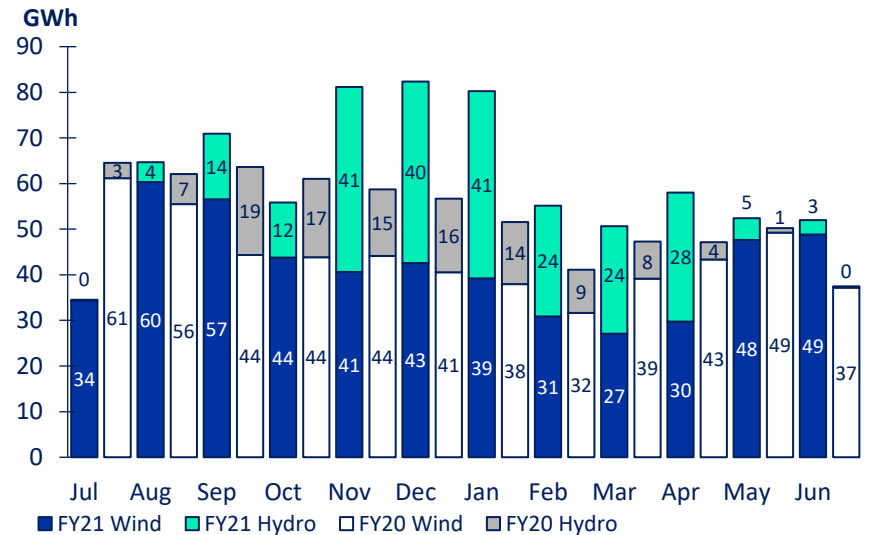
- Meridian’s Australian generation in June 2021 was 38.6% higher than the same month last year, reflecting higher wind generation and higher hydro generation
- To date this financial year, Meridian’s Australian generation is 15.1% higher than the same period last year, reflecting lower wind and higher hydro generation
- Storage at Meridian’s Hume hydro power station increased to 64% of capacity by 14 July 2021
- NEM¹ electricity demand in June 2021 was 2.0% higher than the same month last year
- Spot prices lifted again in June 2021 to be 36% up on the previous month. Active forward prices were also up 14% on the previous month

¹See glossary on page 18 for a definition of Australia’s National Electricity Market

²February average generation prices include the settlement of forward sold Large Generation Certificates:

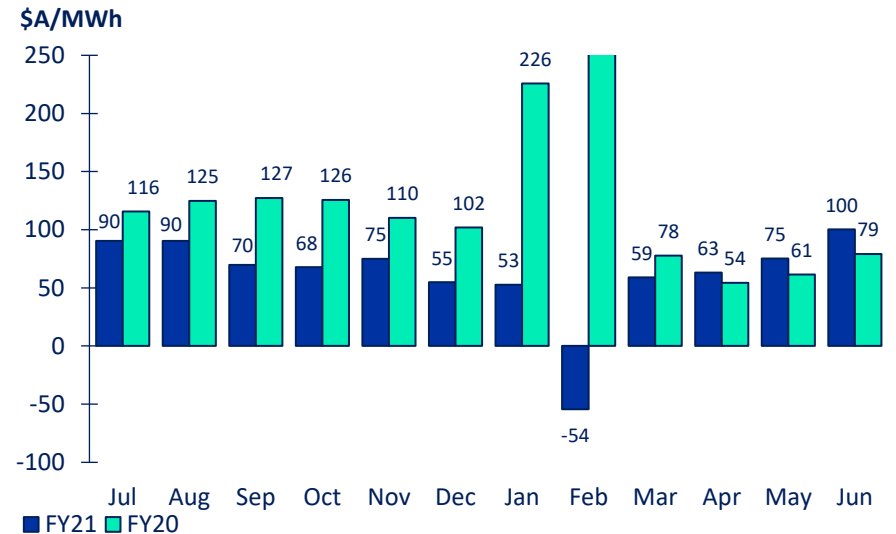
- Forward LGC sales are marked to market monthly through fair value movements
- Sales settle in February each year
- At which point fair value gains or losses on settled sales transfer to generation revenue
- With the FY21 settlement, generation revenue now includes market to market losses of A\$3M
- This compares with settlement gains of A\$12M in FY20

MERIDIAN'S AUSTRALIAN GENERATION



Source: Meridian

AVERAGE WIND GENERATION PRICE²



Source: Meridian

New Zealand

	JUNE 2021 MONTH	JUNE 2020 MONTH	MAY 2021 MONTH	APRIL 2021 MONTH	12 MONTHS TO JUNE 2021	12 MONTHS TO JUNE 2020
New Zealand contracted sales						
Residential sales volume (GWh)	174	170	160	121	1,605	1,547
Small medium business sales volume (GWh)	134	98	126	109	1,294	1,046
Agricultural sales volume (GWh)	43	43	66	116	1,376	1,265
Large business sales volume (GWh)	45	46	44	37	544	484
Corporate and industrial sales volume (GWh)	319	276	339	311	3,586	3,034
Retail contracted sales volume (GWh)	715	634	736	694	8,405	7,376
Average retail contracted sales price (\$NZ/MWh)	\$118.9	\$116.5	\$123.2	\$114.7	\$112.3	\$107.8
NZAS sales volume (GWh)	412	485	426	412	5,011	5,431
Financial contract sales volumes (GWh)	129	280	143	167	1,906	2,527
Average wholesale & financial contracts sales price (\$NZ/MWh)	\$74.1	\$66.5	\$75.2	\$76.8	\$70.7	\$66.8
Retail customer supply volumes (GWh)	753	661	782	718	8,828	7,731
Cost to supply retail customers (\$NZ/MWh)	\$272.2	\$132.2	\$301.9	\$285.5	\$193.0	\$101.7
Cost to supply wholesale customers (\$NZ/MWh)	\$242.5	\$144.3	\$274.2	\$277.8	\$173.5	\$88.7
Cost of financial contracts (\$NZ/MWh)	\$228.2	\$130.6	\$291.8	\$266.4	\$169.6	\$86.3
Total New Zealand customer connections	346,830	324,253	343,015	340,178		

New Zealand

	JUNE 2021 MONTH	JUNE 2020 MONTH	MAY 2021 MONTH	APRIL 2021 MONTH	12 MONTHS TO JUNE 2021	12 MONTHS TO JUNE 2020
New Zealand generation						
Hydro generation volume (GWh)	903	958	900	867	11,297	12,758
Wind generation volume (GWh)	111	126	116	116	1,395	1,465
Total generation volume (GWh)	1,015	1,084	1,016	983	12,692	14,224
Average generation price (\$NZ/MWh)	\$247.5	\$126.9	\$283.4	\$272.5	\$172.9	\$89.0
New Zealand hedging						
Hedging volume (GWh)	360	317	372	348	3,883	2,730
Hedging cost average price (\$NZ/MWh)	\$119.0	\$87.6	\$116.7	\$110.3	\$108.4	\$83.3
Hedging spot revenue average price (\$NZ/MWh)	\$237.6	\$134.9	\$285.0	\$260.2	\$181.7	\$92.5
Future contract close outs (\$NZm)	\$9.7	-\$2.3	-\$2.1	-\$1.6	-\$13.7	-\$13.9

Australia

	JUNE 2021 MONTH	JUNE 2020 MONTH	MAY 2021 MONTH	APRIL 2021 MONTH	12 MONTHS TO JUNE 2021	12 MONTHS TO JUNE 2020
Australian contracted sales						
Retail contracted electricity sales volume (GWh)	81	75	72	59	785	683
Average electricity contracted sales price ¹ (\$A/MWh)	\$130.3	\$147.6	\$132.7	\$127.2	\$135.3	\$146.8
Retail contracted gas sales volume (TJ)	287	270	213	116	1,711	1,491
Average gas contracted sales price ¹ (\$A/GJ)	\$14.4	\$12.5	\$14.8	\$13.0	\$15.1	\$14.8
Financial contract sales volumes ² (GWh)	17	19	17	17	383	534
Financial contracted sales average price (\$A/MWh)	\$49.8	\$68.9	\$49.8	\$49.8	\$70.7	\$93.0
Cost to supply electricity customers (\$A/MWh)	\$187.1	\$78.1	\$147.6	\$76.7	\$85.3	\$103.7
Cost to supply gas customers (\$A/GJ)	\$10.5	\$11.6	\$11.3	\$10.7	\$12.2	\$12.0
Cost of financial contracts (\$A/MWh)	\$118.4	\$48.7	\$92.3	\$52.8	\$50.5	\$80.8
Powershop electricity customer connections ⁷	142,029	136,202	142,470	142,086		
Powershop gas customer connections ⁸	43,905	37,878	43,707	43,092		

Australia

	JUNE 2021 MONTH	JUNE 2020 MONTH	MAY 2021 MONTH	APRIL 2021 MONTH	12 MONTHS TO JUNE 2021	12 MONTHS TO JUNE 2020
Australian generation						
Wind generation volumes (GWh)	49	37	48	30	502	528
Average wind generation price ⁵ (\$A/MWh)	\$100.3	\$79.2	\$75.3	\$63.2	\$66.2	\$130.8
Hydro generation volumes (GWh)	3	0	5	28	238	113
Average hydro generation price ⁵ (\$A/MWh)	\$124.2	\$58.5	\$65.1	\$68.2	\$58.4	\$86.2
PPA generation received (GWh)	31	28	30	25	344	86
Average PPA generation price [net of costs] (\$A/MWh)	\$39.8	-\$9.1	\$19.2	\$0.6	\$1.3	\$14.9
Australian hedging						
Hedging volume ⁶ (GWh)	30	42	38	23	292	500
Hedging costs (\$A/MWh)	\$71.5	\$72.7	\$62.4	\$180.3	\$124.1	\$98.5
Hedging spot revenue average price (\$A/MWh)	\$230.9	\$49.6	\$156.6	\$186.2	\$99.9	\$76.2
Future contract close outs (\$Am)	\$0.0	\$0.0	-\$0.1	\$0.0	-\$1.3	\$2.9

Meridian group

	JUNE 2021 MONTH	JUNE 2020 MONTH	MAY 2021 MONTH	APRIL 2021 MONTH	12 MONTHS TO JUNE 2021	12 MONTHS TO JUNE 2020
Meridian Group						
Employee and Operating Costs ⁹ (\$m)	30	32	24	22	264	259
Stay in Business Capital Expenditure (\$m)	11	6	4	4	45	45
Investment Capital Expenditure (\$m)	4	3	5	4	72	19
Total Capital Expenditure (\$m)	15	9	9	8	117	64

Footnotes

- Contracted sales volumes and volume weighted average price received from contracted customers less distribution costs
- Derivatives sold excluding the sell-side of virtual asset swaps
- Average price of both NZAS sales volume and derivative sales volumes
- Meridian Retail and Powershop New Zealand installation control points (ICPs), excluding vacants
- Volume weighted average price received for Meridian's physical generation
- Over the counter and ASX contract volumes excluding the buy-side of virtual asset swaps
- Financially responsible market participants, excluding vacants
- Meter installation registration numbers
- Excludes electricity metering expenses, now reclassified into gross margin

FY21 operating information

	Jul 2020	Aug 2020	Sep 2020	Oct 2020	Nov 2020	Dec 2020	Jan 2021	Feb 2021	Mar 2021	Apr 2021	May 2021	Jun 2021	Q1 FY21	YoY change	Q2 FY21	YoY change	Q3 FY21	YoY change	Q4 FY21	YoY change
New Zealand contracted sales																				
Residential sales volume (GWh)	186	171	146	127	111	107	101	93	108	121	160	174	503	+31	345	+16	302	+2	455	+9
Small medium business sales volume (GWh)	113	107	105	104	96	99	96	93	111	109	126	134	325	+34	299	+44	300	+39	369	+130
Agricultural sales volume (GWh)	47	72	87	157	142	170	154	177	145	116	66	43	205	+22	469	+60	476	-18	226	+46
Large business sales volume (GWh)	55	52	48	46	44	44	44	46	40	37	44	45	155	+26	134	+14	130	+12	126	+7
Corporate and industrial sales volume (GWh)	282	275	272	283	284	287	288	311	334	311	339	319	829	+93	855	+117	933	+127	968	+215
Retail contracted sales volume (GWh)	683	677	657	717	678	707	683	721	738	694	736	715	2,017	+206	2,102	+252	2,141	+163	2,144	+408
Average retail contracted sales price (\$NZ/MWh)	\$120.4	\$119.3	\$118.1	\$106.0	\$103.1	\$104.2	\$104.1	\$108.7	\$107.5	\$114.7	\$123.2	\$118.9	\$119.3	+\$6.3	\$104.5	+\$3.6	\$106.8	-\$0.1	\$119.0	+\$8.0
NZAS sales volume (GWh)	426	426	411	426	412	426	426	384	426	412	426	412	1,262	-110	1,263	-110	1,236	-123	1,250	-77
Financial contract sales volumes (GWh)	188	125	201	126	221	140	144	126	197	167	143	129	514	+40	487	+59	467	-339	439	-380
Average wholesale & financial contracts sales price (\$NZ/MWh)	\$82.0	\$70.4	\$74.2	\$69.4	\$69.9	\$66.8	\$59.6	\$58.0	\$69.8	\$76.8	\$75.2	\$74.1	\$75.7	+\$6.0	\$68.7	+\$3.9	\$62.9	-\$4.4	\$75.4	+\$9.8
Retail customer supply volumes (GWh)	704	717	696	755	717	743	719	757	768	718	782	753	2,117	+229	2,215	+274	2,244	+163	2,253	+432
Cost to supply retail customers (\$NZ/MWh)	\$165.1	\$120.6	\$140.3	\$126.9	\$101.0	\$118.8	\$143.9	\$256.7	\$265.1	\$285.5	\$301.9	\$272.2	\$141.9	+\$16.8	\$115.8	+\$16.6	\$223.4	+\$146.1	\$286.7	+\$178.7
Cost to supply wholesale customers (\$NZ/MWh)	\$143.8	\$109.6	\$122.2	\$95.8	\$76.3	\$109.2	\$132.6	\$244.8	\$260.3	\$277.8	\$274.2	\$242.5	\$125.2	+\$10.5	\$94.0	+\$9.5	\$211.5	+\$158.5	\$264.9	+\$162.2
Cost of financial contracts (\$NZ/MWh)	\$143.7	\$113.1	\$127.8	\$110.8	\$92.3	\$119.1	\$139.1	\$234.0	\$204.8	\$266.4	\$291.8	\$228.2	\$130.0	+\$16.3	\$104.7	+\$10.2	\$192.5	+\$137.7	\$263.5	+\$166.4
Total New Zealand customer connections	326,148	327,125	328,602	329,710	331,240	332,587	333,367	335,580	338,051	340,178	343,015	346,830	328,602	+19,230	332,587	+18,988	338,051	+18,273	346,830	+22,577
New Zealand generation																				
Hydro generation volume (GWh)	975	904	879	1,066	1,054	1,034	874	868	974	867	900	903	2,758	-474	3,153	-22	2,716	-542	2,670	-423
Wind generation volume (GWh)	115	113	158	126	125	128	117	83	87	116	116	111	385	+8	379	-22	287	-52	344	-4
Total generation volume (GWh)	1,089	1,017	1,037	1,192	1,179	1,162	991	951	1,061	983	1,016	1,015	3,144	-466	3,533	-44	3,003	-593	3,014	-427
Average generation price (\$NZ/MWh)	\$144.5	\$110.1	\$123.7	\$107.7	\$86.5	\$109.3	\$134.5	\$242.1	\$253.8	\$272.5	\$283.4	\$247.5	\$126.5	+\$11.5	\$101.2	+\$13.8	\$210.7	+\$153.0	\$267.8	+\$171.5
New Zealand hedging																				
Hedging volume (GWh)	318	266	268	241	314	308	312	345	431	348	372	360	852	+436	863	+389	1,088	+23	1,079	+305
Hedging cost average price (\$NZ/MWh)	\$109.3	\$104.6	\$101.2	\$96.2	\$93.6	\$93.2	\$98.5	\$115.6	\$127.0	\$110.3	\$116.7	\$119.0	\$105.3	+\$41.8	\$94.2	+\$28.9	\$115.2	+\$13.5	\$115.4	+\$35.9
Hedging spot revenue average price (\$NZ/MWh)	\$133.4	\$123.8	\$132.6	\$114.4	\$94.0	\$121.9	\$136.8	\$235.0	\$219.0	\$260.2	\$285.0	\$237.6	\$130.2	+\$10.9	\$109.7	+\$15.6	\$358.8	+\$282.9	\$261.2	+\$161.3
Future contract close outs (\$NZm)	-1.6	-1.9	-2.9	0.6	-2.9	-1.3	-1.5	-4.5	-3.6	-1.6	-2.1	9.7	-6.4	-4.2	-3.7	-1.1	-9.7	-9.1	\$6.0	\$14.6
Australia contracted sales																				
Retail contracted electricity sales volume (GWh)	85	83	66	61	55	56	57	53	58	59	72	81	234	+49	171	+26	168	+13	212	+13
Average electricity contracted sales price ¹ (\$A/MWh)	\$142.7	\$137.7	\$146.3	\$140.0	\$144.9	\$132.2	\$131.8	\$129.7	\$124.1	\$127.2	\$132.7	\$130.3	\$142.2	-\$1.0	\$139.0	-\$28.5	\$128.5	-\$12.2	\$130.2	-\$9.4
Retail contracted gas sales volume (TJ)	312	280	157	142	52	48	31	31	42	116	213	287	749	+210	242	+8	104	-7	616	+8
Average gas contracted sales price ¹ (\$A/GJ)	\$14.7	\$11.5	\$12.0	\$15.5	\$22.2	\$23.3	\$29.8	\$28.0	\$24.2	\$13.0	\$14.8	\$14.4	\$12.9	-\$0.8	\$18.5	+\$1.9	\$27.0	+\$4.2	\$14.3	+\$0.6
Financial contract sales volumes ² (GWh)	26	33	29	42	41	40	42	38	42	17	17	17	88	-69	124	-73	121	-14	50	+5
Financial contracted sales average price (\$A/MWh)	\$67.6	\$65.7	\$66.5	\$66.8	\$66.8	\$66.4	\$86.4	\$86.4	\$86.4	\$49.8	\$49.8	\$49.8	\$66.5	-\$20.1	\$66.7	-\$13.1	\$86.4	-\$35.6	\$49.8	-\$36.2
Cost to supply electricity customers (\$A/MWh)	\$79.5	\$85.5	\$61.3	\$73.1	\$77.5	\$20.8	\$53.2	\$48.0	\$56.8	\$76.7	\$147.6	\$187.1	\$76.6	-\$40.2	\$57.5	-\$39.6	\$52.8	-\$87.2	\$143.0	+\$74.6
Cost to supply gas customers (\$A/GJ)	\$10.1	\$11.3	\$14.6	\$13.4	\$12.7	\$19.9	\$22.8	\$17.7	\$17.8	\$10.7	\$11.3	\$10.5	\$11.5	+\$0.5	\$14.5	+\$4.2	\$19.3	-\$2.0	\$10.8	-\$1.0
Cost of financial contracts (\$A/MWh)	\$56.7	\$53.5	\$37.0	\$52.2	\$54.4	\$50.0	\$33.2	\$30.2	\$39.1	\$52.8	\$92.3	\$118.4	\$49.1	-\$48.1	\$15.2	-\$23.2	\$34.3	-\$45.2	\$18.9	+\$36.8
Powershop electricity customer connections ⁷	136,696	137,530	138,289	139,162	140,346	140,965	141,203	141,643	141,998	142,086	142,470	142,029	138,289	+23,190	140,965	+16,297	141,998	+7,599	142,029	+5,827
Powershop gas customer connections ⁸	38,544	38,978	39,251	39,540	40,380	40,814	41,247	41,884	42,728	43,092	43,707	43,905	39,251	+12,722	40,814	+10,349	42,728	+7,336	43,905	+6,027
Australia generation																				
Wind generation volume (GWh)	34	60	57	44	41	43	39	31	27	30	48	49	151	-10	127	-2	97	-11	126	-4
Average wind generation price (\$A/MWh)	\$90.3	\$90.4	\$69.6	\$67.8	\$75.0	\$54.8	\$52.7	-\$54.4	\$58.9	\$63.2	\$75.3	\$100.3	\$82.6	-\$39.4	\$65.7	-\$47.1	\$20.4	-\$224.6	\$82.1	+\$18.0
Hydro generation volume (GWh)	0	4	14	12	41	40	41	24	24	28	5	3	19	-11	94	+46	89	+58	36	+31
Average hydro generation price (\$A/MWh)	-	\$51.7	\$39.0	\$59.0	\$72.6	\$86.3	\$37.6	\$33.3	\$43.7	\$68.2	\$65.1	\$124.2	\$41.9	-\$56.3	\$75.3	-\$2.4	\$38.0	-\$57.3	\$72.7	+\$32.3
PPA generation received (GWh)	27	33	34	30	27	29	28	24	25	25	30	31	94	-5	86	-4	78	-9	86	-5
Average PPA generation price [net of costs] (\$A/MWh)	-\$1.6	-\$3.8	-\$14.4	-\$2.2	-\$1.1	-\$10.7	-\$15.8	-\$18.2	-\$13.4	\$0.6	\$19.2	\$39.8	-\$7.0	-\$37.0	-\$4.7	-\$28.2	-\$15.8	-\$32.7	\$21.2	+\$33.6
Australia hedging																				
Hedging volume (GWh)	35	42	37	13	20	16	9	15	13	23	38	30	115	+4	49	-99	37	-88	92	-26
Hedging costs (\$A/MWh)	\$48.4	\$78.3	\$82.6	\$204.9	\$176.2	\$99.7	\$482.6	\$266.8	\$266.6	\$180.3	\$62.4	\$71.5	\$70.6	-\$26.7	\$157.9	+\$56.7	\$319.2	+\$194.4	\$95.0	+\$28.1
Hedging spot revenue average price (\$A/MWh)	\$18.6	\$55.8	\$40.6	\$149.6	\$71.6	\$69.7	\$109.7	\$82.2	\$50.4	\$186.2	\$156.6	\$230.9	\$39.5	-\$66.0	\$91.3	+\$11.7	\$77.9	-\$2.2	\$188.5	+\$143.6
Future contract close outs (\$A M)	-\$0.2	\$0.0	\$0.0	\$0.0	\$0.0	\$0.0	-\$0.3	-\$0.7	\$0.0	\$0.0	-\$0.1	\$0.0	-\$0.3	-\$0.4	-\$0.1	-\$0.7	-\$0.9	-\$1.2	-\$0.1	-\$1.7
Meridian Group																				
Employee and Operating Costs (\$NZ m)	21	21	21	21	22	21	18	21	22	22	24	30	63	-2	64	+2	61	-1	76	+6
Stay in Business Capital Expenditure (\$NZ m)	3	4	4	4	3	3	3	3	4	4	4	6	11	+0	10	-2	10	-0	14	+2
Investment Capital Expenditure (\$NZ m)	7	3	3	2	2	3	2	3	34	4	5	4	13	+8	7	+3	39	+34	13	+8
Total Capital Expenditure (\$NZ m)	10	7	7	6	5	6	5	6	38	8	9	10	24	+8	17	+1	49	+34	27	+10

FY20 operating information

	Jul 2019	Aug 2019	Sep 2019	Oct 2019	Nov 2019	Dec 2019	Jan 2020	Feb 2020	Mar 2020	Apr 2020	May 2020	Jun 2020
New Zealand contracted sales												
Residential sales volume (GWh)	165	166	140	129	101	98	97	92	111	124	151	170
Small medium business sales volume (GWh)	97	99	95	89	85	81	86	87	88	57	85	98
Agricultural sales volume (GWh)	42	65	76	89	138	181	200	163	131	71	65	43
Large business sales volume (GWh)	46	45	38	40	39	40	38	39	41	33	40	46
Corporate and industrial sales volume (GWh)	249	255	233	243	247	248	272	264	269	222	255	277
Retail contracted sales volume (GWh)	599	630	583	590	610	650	694	646	639	507	596	634
Average retail contracted sales price (\$NZ/MWh)	\$113.5	\$115.4	\$109.5	\$102.7	\$99.8	\$100.0	\$103.3	\$109.5	\$108.3	\$109.2	\$106.8	\$116.5
NZAS sales volume (GWh)	463	463	447	463	448	463	463	433	463	416	426	485
Financial contract sales volumes (GWh)	150	176	148	129	135	164	170	283	354	222	318	280
Average wholesale & financial contracts sales price (\$NZ/h)	\$69.9	\$70.9	\$68.4	\$67.0	\$65.3	\$62.3	\$66.5	\$68.7	\$66.7	\$64.8	\$65.4	\$66.5
Retail customer supply volumes (GWh)	645	662	581	623	650	669	733	682	666	537	624	661
Cost to supply retail customers (\$NZ/MWh)	\$110.4	\$135.6	\$129.3	\$130.2	\$112.7	\$57.1	\$95.1	\$67.9	\$67.4	\$50.1	\$132.3	\$132.2
Cost to supply wholesale customers (\$NZ/MWh)	\$97.9	\$120.5	\$126.1	\$118.7	\$89.6	\$45.4	\$76.8	\$36.6	\$44.7	\$43.4	\$113.4	\$144.3
Cost of financial contracts (\$NZ/MWh)	\$101.9	\$118.2	\$120.5	\$112.6	\$92.8	\$81.6	\$86.7	\$47.0	\$45.7	\$52.1	\$98.9	\$130.6
Total New Zealand customer connections	304,993	307,798	309,372	311,694	313,150	313,599	315,225	317,784	319,778	321,051	322,448	324,253
New Zealand generation												
Hydro generation volume (GWh)	1,111	1,106	1,015	980	1,049	1,147	1,095	1,077	1,085	959	1,176	958
Wind generation volume (GWh)	116	135	126	143	133	125	122	108	109	116	106	126
Total generation volume (GWh)	1,227	1,241	1,141	1,123	1,182	1,272	1,217	1,185	1,194	1,075	1,282	1,084
Average generation price (\$NZ/MWh)	\$100.7	\$122.7	\$121.9	\$121.4	\$93.7	\$51.4	\$77.1	\$43.4	\$52.1	\$41.9	\$116.0	\$126.8
New Zealand hedging												
Hedging volume (GWh)	145	139	132	145	148	182	296	342	428	239	218	317
Hedging cost average price (\$NZ/MWh)	\$65.0	\$63.2	\$62.2	\$64.4	\$67.3	\$64.4	\$96.1	\$100.7	\$106.4	\$77.4	\$70.1	\$87.6
Hedging spot revenue average price (\$NZ/MWh)	\$104.4	\$130.5	\$124.0	\$122.6	\$104.1	\$63.1	\$100.0	\$75.1	\$59.8	\$51.5	\$101.9	\$134.9
Future contract close outs (\$NZm)	-0.3	-0.6	-1.4	-1.5	-0.2	-0.9	-0.2	-0.2	-0.1	-2.0	-4.3	-2.3
Australia contracted sales												
Retail contracted electricity sales volume (GWh)	63	66	55	49	46	50	51	50	53	57	68	75
Average electricity contracted sales price ¹ (\$A/MWh)	\$149.8	\$147.0	\$131.2	\$168.0	\$174.0	\$161.1	\$130.0	\$150.4	\$142.0	\$121.1	\$146.5	\$147.6
Retail contracted gas sales volume (TJ)	176	192	171	119	64	51	22	37	52	108	231	270
Average gas contracted sales price ¹ (\$A/GJ)	\$13.9	\$14.0	\$13.4	\$13.8	\$18.9	\$20.0	\$33.4	\$22.2	\$18.7	\$12.5	\$15.4	\$12.5
Financial contract sales volumes ² (GWh)	54	43	60	65	63	68	46	43	46	7	19	22
Financial contracted sales average price (\$A/MWh)	\$83.3	\$86.1	\$90.1	\$80.1	\$80.1	\$79.2	\$122.0	\$122.0	\$122.0	\$176.6	\$69.5	\$59.8
Cost to supply electricity customers (\$A/MWh)	\$105.5	\$126.4	\$118.0	\$119.9	\$89.2	\$82.2	\$257.6	\$111.9	\$53.6	\$56.8	\$67.5	\$78.1
Cost to supply gas customers (\$A/GJ)	\$11.8	\$11.4	\$9.8	\$8.6	\$14.0	\$9.9	\$41.1	\$20.4	\$13.6	\$13.4	\$11.2	\$11.6
Cost of financial contracts (\$A/MWh)	\$86.9	\$101.0	\$103.6	\$100.1	\$68.3	\$58.2	\$138.8	\$52.2	\$45.8	\$87.4	\$39.8	\$42.3
Powershop electricity customer connections ⁷	111,373	112,995	115,099	118,721	121,575	124,668	127,847	131,647	134,399	135,205	135,628	136,202
Powershop gas customer connections ⁸	24,096	25,240	26,529	27,858	29,182	30,465	32,387	33,428	35,392	36,077	36,955	37,878
Australia generation												
Wind generation volume (GWh)	61	56	44	44	44	41	38	32	39	43	49	37
Average wind generation price (\$A/MWh)	\$115.7	\$124.7	\$127.3	\$125.5	\$110.3	\$101.9	\$225.9	\$474.6	\$77.8	\$54.2	\$61.4	\$79.2
Hydro generation volume (GWh)	3	7	19	17	15	16	14	9	8	4	1	0
Average hydro generation price (\$A/MWh)	\$81.0	\$104.0	\$99.2	\$99.4	\$66.9	\$64.4	\$153.1	\$56.4	\$43.8	\$39.1	\$39.9	\$58.5
PPA generation received (GWh)	35	34	30	31	30	29	29	28	30	30	32	28
Average PPA generation price [net of costs] (\$A/MWh)	\$22.9	\$30.3	\$38.4	\$45.2	\$16.5	\$7.8	\$59.5	\$1.4	-\$8.9	-\$14.5	-\$13.1	-\$9.1
Australia hedging												
Hedging volume (GWh)	36	39	36	50	48	50	39	43	42	36	40	37
Hedging costs (\$A/MWh)	\$87.3	\$98.6	\$105.6	\$102.1	\$109.8	\$93.9	-\$23.1	\$197.7	\$185.1	\$79.3	-\$49.6	\$80.6
Hedging spot revenue average price (\$A/MWh)	\$99.6	\$105.5	\$111.4	\$107.7	\$72.3	\$58.6	\$130.3	\$58.6	\$43.5	\$41.7	\$42.9	\$55.0
Future contract close outs (\$A M)	\$0.0	\$0.2	-\$0.1	\$0.0	\$0.7	-\$0.1	\$0.0	\$0.5	-\$0.1	\$0.8	\$0.7	\$0.0
Meridian Group												
Employee and Operating Costs (\$NZ m)	21	21	22	22	22	19	19	21	21	20	19	31
Stay in Business Capital Expenditure (\$NZ m)	4	3	4	4	4	4	3	3	4	3	3	6
Investment Capital Expenditure (\$NZ m)	1	2	2	1	2	1	1	2	2	1	1	3
Total Capital Expenditure (\$NZ m)	5	5	6	5	6	5	4	5	6	4	4	9

Glossary

Hedging volumes	buy-side electricity derivatives excluding the buy-side of virtual asset swaps
Average generation price	the volume weighted average price received for Meridian's physical generation
Average retail contracted sales price	volume weighted average electricity price received from retail customers, less distribution costs
Average wholesale contracted sales price	volume weighted average electricity price received from wholesale customers (including NZAS) and financial contracts
Combined catchment inflows	combined water inflows into Meridian's Waitaki and Waiau hydro storage lakes
Cost of hedges	volume weighted average price Meridian pays for derivatives acquired
Cost to supply contracted sales	volume weighted average price Meridian pays to supply contracted customer sales and financial contracts
Contracts for Difference (CFDs)	an agreement between parties to pay the difference between the wholesale electricity price and an agreed fixed price for a specified volume of electricity. CFDs do not result in the physical supply of electricity
Customer connections (NZ)	number of installation control points, excluding vacants
FRMP	financially responsible market participant
GWh	gigawatt hour. Enough electricity for 125 average New Zealand households for one year
Historic average inflows	the historic average combined water inflows into Meridian's Waitaki and Waiau hydro storage lakes over the last 85 years
Historic average storage	the historic average level of storage in Meridian's Waitaki catchment since 1979
HVDC	high voltage direct current link between the North and South Islands of New Zealand
ICP	New Zealand installation control points, excluding vacants
ICP switching	the number of installation control points changing retailer supplier in New Zealand, recorded in the month the switch was initiated
MWh	megawatt hour. Enough electricity for one average New Zealand household for 46 days
National demand	Electricity Authority's reconciled grid demand www.emi.ea.govt.nz
NEM	Australia's national energy market, comprising Queensland, New South Wales (including the Australian Capital Territory), Victoria, South Australia, and Tasmania
NZAS	New Zealand Aluminium Smelters Limited
Retail sales volumes	contract sales volumes to retail customers, including both non half hourly and half hourly metered customers
Financial contract sales	sell-side electricity derivatives excluding the sell-side of virtual asset swaps
TJ	Terajoules
Virtual Asset Swaps (VAS)	CFDs Meridian has with Genesis Energy and Mercury New Zealand. They do not result in the physical supply of electricity