



## Harapaki Wind Farm Development, Hawke's Bay

August 2022 Update | EDITION #7

Kia ora koutou

We continue to make steady progress on building on what will be Aotearoa's second largest wind farm. Those of you who travel regularly on State Highway 5 may have noticed the forming of the main access road up to the wind farm is now complete and the building of the substation is well underway. The Project Team are excited about the progress that has been made after nearly 12 months of work in some particularly challenging weather conditions.

### Construction progress

To ensure the smooth operation of a wind farm, there are a few buildings required – an operations and maintenance (O&M) building, and a substation are key. The O&M building is underway with groundworks completed and handover achieved to local construction company, Alexanders, to construct the building.

Work has been steady on the substation build. The control room foundations have been completed and concrete wall panels lifted into place. Soon the two transformers required for the wind farm will be arriving in New Zealand. The transformers take close to a year to be built, then require rigorous testing before they are transported by ship from South Korea.



Construction of  
the substation.

The civil works team continue to deal with challenging weather conditions and COVID-19 disruption. The main access road out to the northern end of the wind farm continues to take shape and we have started constructing the 41 turbine foundations.

### Bird monitoring

It's really important to us that we look after our local environment and build strong relationships with people from within the local community.

An example of this is the avifauna monitoring programme we have on site, with bird specialists visiting the site every six weeks. We've created 21 monitoring stations across the project.

The avifauna monitoring team consists of specialists from the project ecologist team at Boffa Miskell. Early on, the project team identified potential for a local partnership and as such have created a joint team aided by Cultural Monitor Guy Te Kahikā. He has a keen interest in birds and has assisted DOC (Department of Conservation) with various avifauna studies around Hawke's Bay. Guy represents Maungaharuru Tangitū Trust and his local knowledge of the area has helped form an invaluable partnership with the specialist avifauna monitoring team.

### Matariki celebrations

To recognise and celebrate Matariki, we hosted a sunrise event for the large team on site. The celebrations were led by our cultural monitoring team with Te Rangihau Gilbert opening with karakia. He then provided a whaekōrero (explanation) of Matariki followed by playing a kōauau (a bone carved flute made from fresh local deer bone), that was then presented to Meridian.

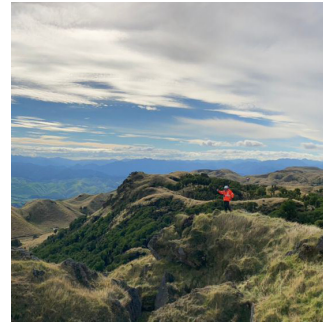
The group of around 90 people from the various contractors then shared kai prepared by our local school, Te Pōhue PTA. It was a special occasion for everyone involved.

If you have any queries about the project, please email us at [harapaki@meridianenergy.co.nz](mailto:harapaki@meridianenergy.co.nz).

Ngā mihi

#### Robert Batters

Project Manager Harapaki Wind Farm



Cultural Monitor Guy Te Kahikā on the lookout for birds in the area.



The Specialist Avifauna Monitoring Team in Action.



Kōauau - bone carved flute.